

fiber

THE PURE AND SIMPLE MOODS OF NATURE

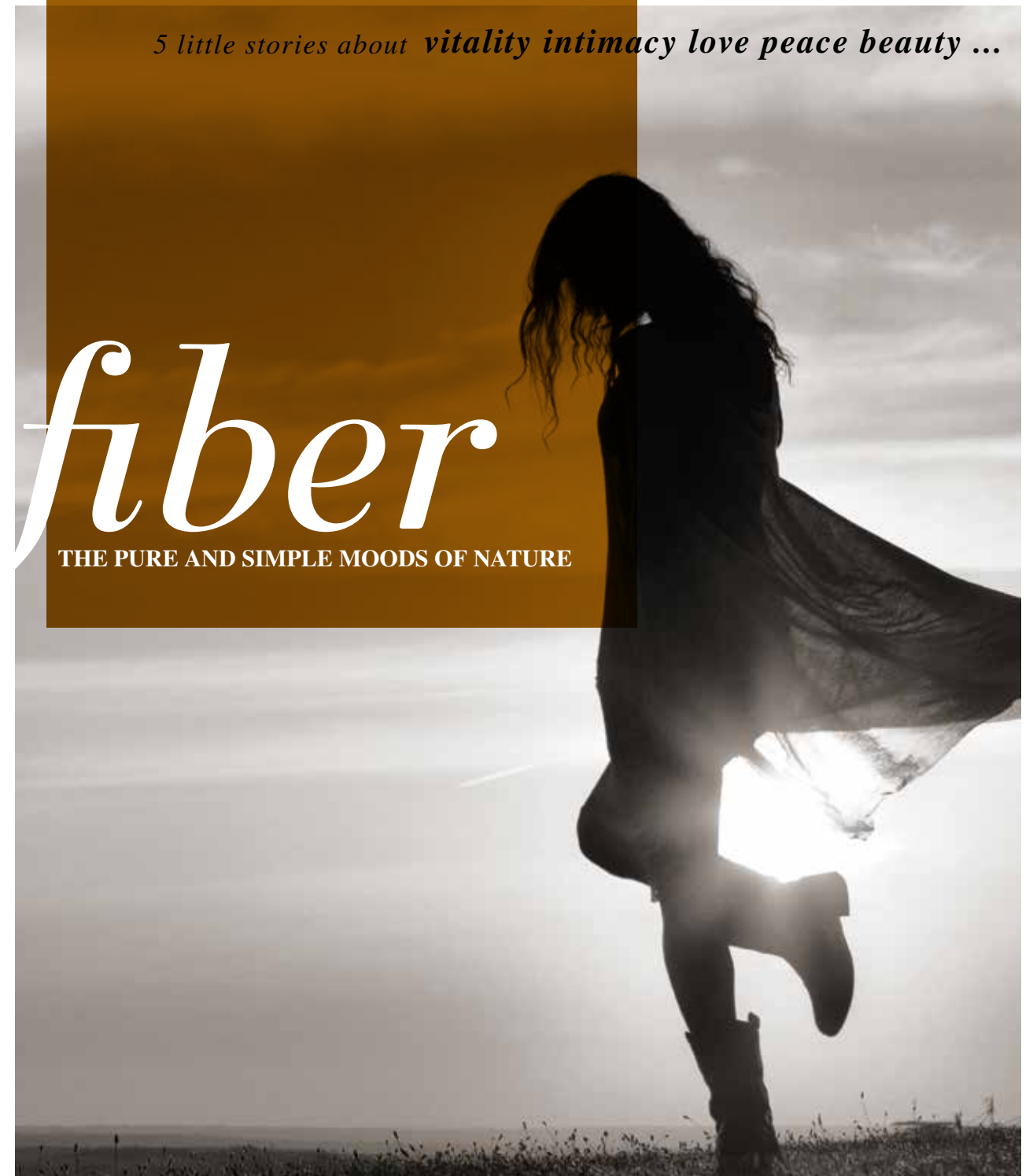
5 .. little stories about
beauty / peace / intimacy
love & vitality ...

★★★★★
NAXOS[®]
CERAMICHE
FINCIBEC GROUP

5 little stories about *vitality intimacy love peace beauty ...*

fiber

THE PURE AND SIMPLE MOODS OF NATURE



fiber

26X60,5 | 10,2" X 23,8"
RIVESTIMENTI IN PASTA BIANCA
WHITE BODY WALL TILES
PAVIMENTI IN GRES FINE PORCELLANATO
FINE PORCELAIN STONEWARE TILES

YUCCA / YUTE / RAPHIA

Una fibra naturale, sobria e delicata ma essenzialmente forte, un'anima femminile capace di tenerezza e romanticismo, ma anche piena di coraggio, avventurosa e libera. Come la Natura. La collezione Fiber di Naxos evoca naturalezza, accoglienza e calore, come un bagno caldo mentre fuori nevicica; ma anche aria, luce, vitalità, come una corsa all'alba sulla spiaggia. L'essenza di Fiber svela molteplici emozioni, da scoprire e vivere, giorno per giorno.

A natural fiber, simple and delicate, however essentially strong, with a female soul capable of affection and romanticism, yet also full of courage, adventure and freedom. As in Nature. The Naxos Fiber Collection evokes naturalness, is inviting and warm, like a hot bathroom as it snows outside; but also air, light, vitality, like a jog at dawn on the beach. The essence of Fiber reveals multiple emotions, to discover and live, day by day.



fiber

26X60,5

YUCCA

3 nuances neutre e delicate, i colori del lino, della canapa, del cotone...
 La texture rimanda a fibre naturali, in cui si distinguono le lievi sfumature tono su tono. Alcuni fondi presentano una struttura in 3d che richiama superfici intrecciate, con un affascinante gioco di spessori e tonalità.
 Più delicata ma ugualmente interessante la grafica del fondo Line, con un effetto cromatico più accentuato rispetto ai fondi neutri. Il

fondo Bamboo si presta ad atmosfere Zen, ma sempre con un tocco di eleganza.
 Infine la serie si completa con una proposta di mosaici preincisi, tipo spaccatella, neutri o con inserti iridescenti, oro, platino, per un tocco delicatamente lezioso.
 I pavimenti Fiber sono in formato 45x45, nelle stesse 3 tonalità principali, YUCCA, YUTE e RAPHIA. Al rivestimento Fiber inoltre si abbinano i pavimenti effetto legno, in formato 23x100 ORTLES, EGA e FASSA.

RAPHIA

line

YUTE

brick

bamboo

*3 neutral and delicate nuances, the colours of linen, hemp and cotton...
 The texture recalls natural fibres, distinguished with subtle tone on tone shades. Some bases have a 3d structure recalling woven surfaces, with a fascinating play on thicknesses and tones.
 More delicate, but equally interesting, the graphic of the line base, with a more accentuated chromatic effect than the neutral tones.
 The bamboo base recalls zen atmospheres, yet always with a touch of elegance.
 Lastly, the series is completed with pre-engraved mosaics, such as spaccatella cladding, neutral or with iridescent inserts, gold and platinum, for a delicately precious touch.
 Fiber floors come in format 45x45, in the same 3 main tones, YUCCA, YUTE and RAPHIA. Fiber coverings are also combined with wooden effect floors, in format 23x100 ORTLES, EGA and FASSA.*

fiber YUCCA



#story1 / vitality

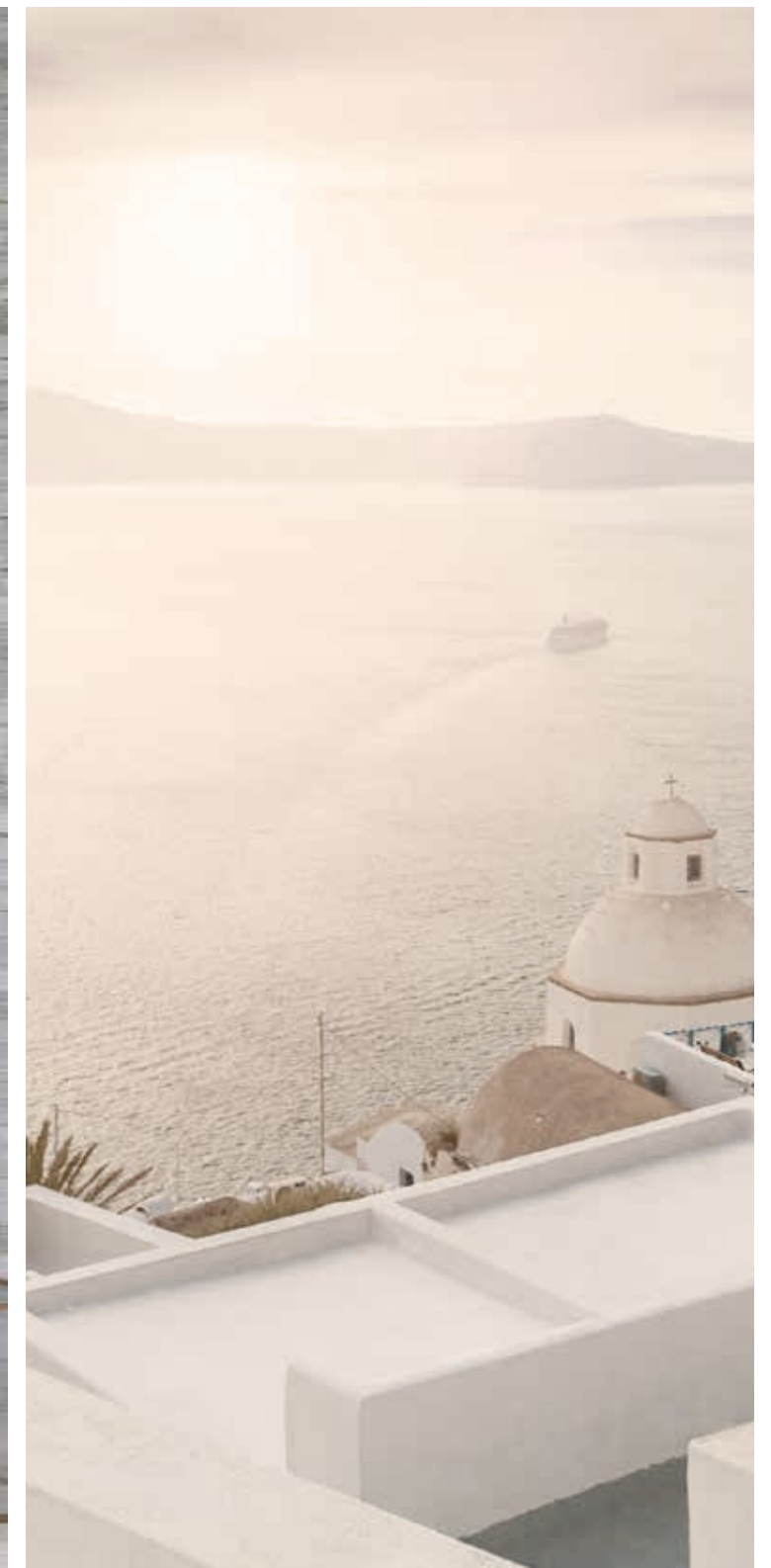
“Let’s start “breathing” a new sparkling seaside season”



AMBIENTE REALIZZATO CON / SETTING REALIZED WITH
YUCCA 26X60,5
FASCIA IRIDIUM YUCCA 26X60,5
YUCCA PAV. 45X45



AMBIENTO REALIZZATO CON / SETTING REALIZED WITH
YUCCA 26X60,5 - LINE YUCCA 26X60,5 - FASCIA IRIIDIUM YUCCA 26X60,5
YUCCA PAV. 45X45



AMBIENTE REALIZZATO CON / SETTING REALIZED WITH
LINE YUCCA 26X60,5



AMBIENTE REALIZZATO CON / SETTING REALIZED WITH
SPACCATELLA YUCCA 26X60,5



fiber YUTE



#story2 / intimacy

"My snowy sunday morning"



AMBIENTE REALIZZATO CON / SETTING REALIZED WITH
YUTE 26X60,5 - BRICK YUTE 26X26
ORTLES PAV. 23X100



AMBIENTE REALIZZATO CON / SETTING REALIZED WITH
YUTE 26X60,5 - LINE YUTE 26X60,5 - LISTELLO FIBER YUTE 6,3X60,5 - BRICK YUTE 26X26
ORTLES PAV. 23X100



AMBIENTE REALIZZATO CON / SETTING REALIZED WITH
YUTE 26X60,5 - LINE YUTE 26X60,5 - LISTELLO FIBER YUTE 6,3X60,5

fiber YUTE



#story3 / love
"Our sunsets on the lake"



AMBIENTE REALIZZATO CON / SETTING REALIZED WITH
YUTE 3D 26X60,5 - SPACCATELLA YUTE 26X60,5
YUTE PAV. 45X45



AMBIENTE REALIZZATO CON / SETTING REALIZED WITH
YUTE 26X60,5 - YUTE 3D 26X60,5 - SPACCATELLA YUTE 26X60,5
YUTE PAV 45X45



AMBIENTE REALIZZATO CON / SETTING REALIZED WITH
YUTE 3D 26X60,5

fiber RAPHIA



#story4 / peace
"A relaxing holyday farm weekend"



AMBIENTE REALIZZATO CON / SETTING REALIZED WITH
RAPHIA 26X60,5 - BRICK EGA 30X30



AMBIENTE REALIZZATO CON / SETTING REALIZED WITH
RAPHIA 26X60,5 - RAPHIA 3D 26X60,5 - BRICK EGA 30X30
EGA PAV. 23X100



AMBIENTE REALIZZATO CON / SETTING REALIZED WITH
RAPHIA 3D 26X60,5



AMBIENTE REALIZZATO CON / SETTING REALIZED WITH
LINE RAPHIA 26X60,5



fiber
RAPHIA



#story5 / beauty

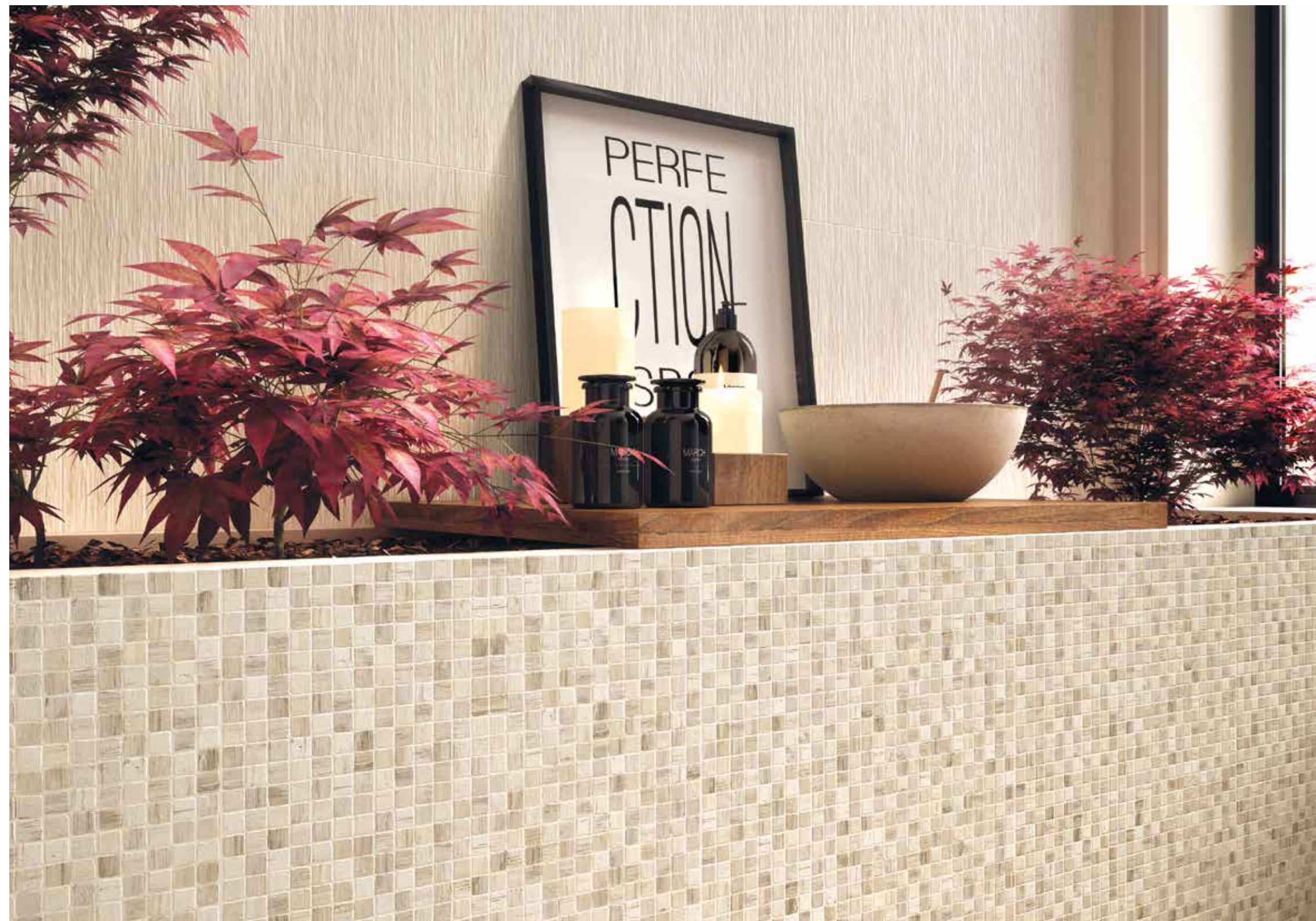
"Some times I hide in my secret place"



AMBIENTE REALIZZATO CON / SETTING REALIZED WITH
BAMBOO RAPHIA 26X60,5



AMBIENTE REALIZZATO CON / SETTING REALIZED WITH
RAPHIA 26X60,5 - SPACCATELLA RAPHIA 26X60,5 - BAMBOO RAPHIA 26X60,5
FASSA PAV. 23X100



AMBIENTE REALIZZATO CON / SETTING REALIZED WITH
RAPHIA 26X60,5 - SPACCATELLA RAPHIA 26X60,5

fiber

26x60,5

RIVESTIMENTI IN PASTA BIANCA - WHITE BODY WALL TILES



26x60,5
90803 Yucca / ■ 88



26x60,5
90820 Line Yucca / ■ 99



26x60,5
90836 Bamboo Yucca / ■ 112



26x60,5
90810 Yute / ■ 88



26x60,5
90821 Line Yute / ■ 99



26x60,5
90837 Bamboo Yute / ■ 112



26x60,5
90830 Yucca 3D / ■ 112



26x60,5
90833 Spaccatella Yucca / ■ 112



26x60,5
90831 Yute 3D / ■ 112



26x60,5
90834 Spaccatella Yute / ■ 112



26x60,5
92446 Fascia Iridium Yucca / ● 147



26x26
90906 Brick Yucca / ● 25



6,3x60,5
92451 Listello Fiber Yucca / ● 44



26x60,5
92449 Fascia Iridium Yute / ● 147



26x26
90907 Brick Yute / ● 25



6,3x60,5
92452 Listello Fiber Yute / ● 44

YUCCA

YUTE

fiber

26x60,5

RIVESTIMENTI IN PASTA BIANCA - WHITE BODY WALL TILES



26x60,5
90819 Raphia / ■ 88



26x60,5
90822 Line Raphia / ■ 99



26x60,5
90838 Bamboo Raphia / ■ 112



26x60,5
90832 Raphia 3D / ■ 112



26x60,5
90835 Spaccatella Raphia / ■ 112



26x60,5
92450 Fascia Iridium Raphia / ● 147



26x26
90908 Brick Raphia / ● 25



6,3x60,5
92453 Listello Fiber Raphia / ● 44

RAPHIA

PAVIMENTI IN GRES FINE PORCELLANATO - FINE PORCELAIN STONEWARE FLOORS

fiber



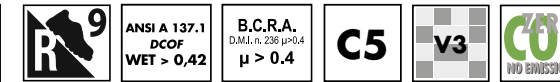
45x45
90915 Yucca / ■ 84



45x45
90916 Yute / ■ 84



45x45
90920 Raphia / ■ 84



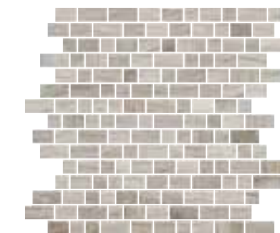
23x100
89093 Orties / ■ 99



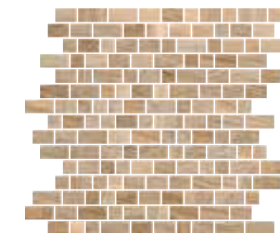
23x100
89092 Fassa / ■ 99



23x100
89091 Ega / ■ 99



30x30
90910 Brick Orties / ● 45



30x30
90909 Brick Fassa / ● 45



30x30
90911 Brick Ega / ● 45

Categorie d'impiego per pavimenti in gres fine porcellanato

Use classes for fine porcelain stoneware floors

C1	Piastrelle da pavimento consigliate per calpestio leggero Floor tiles recommended for light traffic
C2	Piastrelle da pavimento consigliate per calpestio medio-leggero Floor tiles recommended for medium-light traffic
C3	Piastrelle da pavimento consigliate per calpestio medio Floor tiles recommended for medium traffic
C4	Piastrelle da pavimento consigliate per calpestio medio-pesante Floor tiles recommended for medium-heavy traffic
C5	Piastrelle da pavimento consigliate per calpestio intenso Floor tiles recommended for highly stressed uses

Variazioni cromatiche

Colour variations

	V1 Aspecto uniforme Even appearance
	V2 Lieve variazione Light variation
	V3 Media variazione Medium variation
	V4 Intensa variazione Strong variation

È indispensabile all'atto della posa, prelevare le piastrelle da più confezioni. It is necessary to take the tiles from several different boxes when laying them.

23x100 pav.

Pesi e Imballi rivestimento / wall tile

Weights and packaging

	26x60,5	26x26 brick	26x60,5 fascia	6,3x60,5 listello
	Pc. 8	5	2	4
	m² 1,26	0,338	-	-
	Kg 18	4,84	5,26	-
	Colli/Boxes 48	-	-	-
	m² 60,48	-	-	-
	Kg 864	-	-	-

Pesi e Imballi pavimento / floor tile

Weights and packaging

	45x45	23x100	30x30 mos. brick
	Pc. 6	5	5
	m² 1,215	1,15	0,45
	Kg 23	24	7,26
	Colli/Boxes 36	48	-
	m² 43,74	55,2	-
	Kg 828	1152	-

Note / Notes

I prodotti possono essere modificati da Fincibec senza preavviso, respingendo ogni responsabilità su possibili danni diretti o indiretti causati da potenziali modifiche. Fincibec reserves the right to modify its products without prior notice and cannot be held liable for direct or indirect damage caused by such modifications.

Verificare sempre la correttezza delle informazioni e dei dati relativi a codici, imballaggi e pesi, consultando il listino prezzi in vigore. Always refer to the price list in force to ensure correct information and data on codes, packaging, and weight.

Le tonalità dei colori riportate nel catalogo sono indicative / The colours shades, reported on the catalogue, are indicative.

CARATTERISTICHE TECNICHE MONOPOROSA - WHITE BODY - PATE BLANCHE, WEISSER

SCHERBEN, PASTA BLANCA, БЕЛУЮ ПАСТУ

TECHNICAL SPECIFICATIONS - TECHNISCHE EIGENSCHAFTEN - CARACTÉRISTIQUES TECHNIQUES - CARACTERÍSTICAS TÉCNICAS - ТЕХНИЧЕСКИЕ ХАРАКТЕРИСТИКИ

STANDARDS : UNI EN 14411 ANNEX L - BIII / UNI EN ISO 13006 ANNEX L - BIII

CARATTERISTICHE TECNICHE TECHNICAL DATA TECHNISCHE DATEN CARACTÉRISTIQUES TECHNIQUES CARACTERÍSTICAS TÉCNICAS ТЕХНИЧЕСКИЕ ХАРАКТЕРИСТИКИ	TIPO DI PROVA STANDARD OF TEST NORME DU TEST TESTNORM TIPO DE PRUEBA TÍPO DE TESTA	VALORI PRESCRITTI DALLE NORME INTERNATIONAL STANDARDS INTERNATIONALE NORMWERTE VALEURS PREVUES PAR LES NORMES VALORES PREVISTOS POR LAS NORMAS ПРЕДУСМОТРЕННЫЕ СТАНДАРТОМ		VALORE MEDIO NAXOS NAXOS AVERAGE VALUE NAXOS MITTELWERT VALEURS MOYEN NAXOS VALOR MEDIO NAXOS СРЕДНЕЕ ЗНАЧЕНИЕ NAXOS
		REQUIREMENTS FOR NOMINAL SIZE N		MATT
		7 mm ≤ N < 15 mm	N ≥ 15 mm	
LATI SIDES - SEITEN COTES - CANTOS РАЗМЕРЫ СТОРОН	EN ISO 10545-2	± 0,75 mm	± 0,5 % (± 2,0 mm)	CONFORME COMPLYING - ERFÜLLT CONFORME - CONFORME СОУТВЕТСТВУЕТ
SPESSORE THICKNESS - DICKE ÉPAISSEUR - ESPESOR ТОЛЩИНА	EN ISO 10545-2	± 0,5 mm	± 10 % (± 0,5 mm)	CONFORME COMPLYING - ERFÜLLT CONFORME - CONFORME СОУТВЕТСТВУЕТ
RETTILINEITÀ DEGLI SPIGOLI STRAIGHTNESS OF SIDES - GERÄDLICHKEIT DER KANTEN RECTITUDE DES ARÊTES - RECTITUD DE LOS CANTOS - КОСОУГОЛЬНОСТЬ	EN ISO 10545-2	± 0,5 mm	± 0,3% (± 1,5 mm)	CONFORME COMPLYING - ERFÜLLT CONFORME - CONFORME СОУТВЕТСТВУЕТ
ORTOGONALITÀ RECTANGULARITY - RECHTWINKLIGKEIT PERPENDICULARITÉ - ORTOGONALIDAD КРИВИЗНА СТОРОН	EN ISO 10545-2	± 0,75 mm	± 0,5% (± 2,0 mm)	CONFORME COMPLYING - ERFÜLLT CONFORME - CONFORME СОУТВЕТСТВУЕТ
PLANARITÀ SURFACE FLATNESS - EBENFLÄCHIGKEIT PLANEITÉ DE SURFACE - PLANEIDAD КРИВИЗНА ЛИЦЕВОЙ ПОВЕРХНОСТИ	EN ISO 10545-2	CENTRE CURVATURE	+ 0,75 mm - 0,5 mm	+ 0,5% (+2,0 mm) - 0,3% (-1,5 mm)
		EDGE CURVATURE	+ 0,75 mm - 0,5 mm	+ 0,5% (+2,0 mm) - 0,3% (-1,5 mm)
		WARPAGE	+ 0,75 mm	± 0,5% (± 2,0mm)
ASSORBIMENTO D'ACQUA WATER ABSORPTION - WASSERAUFNAHME ABSORPTION D'EAU - ABSORCIÓN DE AGUA ВОДОПОГЛОЩЕНИЕ	EN ISO 10545-3	E _p > 10%		10% < E _p ≤ 20%
RESISTENZA ALLA FLESSIONE FLEXION RESISTANCE - BIEGEFESTIGKEIT RESISTENCIA A LA FLEXIÓN - RESISTENCIA A LA FLEXIÓN ПРЕДЕЛ ПРОЧНОСТИ ПРИ ИЗГИБЕ	EN ISO 10545-4	> 600 N > 12 N/mm ²		CONFORME COMPLYING - ERFÜLLT CONFORME - CONFORME СОУТВЕТСТВУЕТ
RESISTENZA ALL'URTO IMPACT RESISTANCE - STOSSFESTIGKEIT RESISTANCE AUX CHOCES - RESISTENCIA A LOS GOLPES УДАРНОСТОЙКОСТЬ	EN ISO 10545-5	VALORE DICHIARATO DECLARED VALUE - ANGEGEBENER WERT VALEUR DÉCLARÉE - VALOR DECLARADO - ЗАЯВЛЕННОЕ ЗНАЧЕНИЕ		> 0,6
COEFFICIENTE DI DILATAZIONE TERMICA LINEARE COEFFICIENT OF LINEAR THERMAL EXPANSION - LINEARER WÄRMEAUDEHNUNGSKOEFFIZIENT COEFFICIENT DE DILATATION THERMIQUE LINEAIRE - COEFICIENTE DE DILATACIÓN TÉRMICA LINEAL КОЭФИЦИЕНТ ЛИНЕЙНОГО ТЕРМИЧЕСКОГО РАСТЯЖЕНИЯ	EN ISO 10545-8	VALORE DICHIARATO DECLARED VALUE - ANGEGEBENER WERT VALEUR DÉCLARÉE - VALOR DECLARADO - ЗАЯВЛЕННОЕ ЗНАЧЕНИЕ		α = 6,7 × 10 ⁻⁶ / °C
RESISTENZA AGLI SBALZI TERMICI RESISTANCE TO THERMAL SHOCKS - BESTÄNDIGKEIT GEGEN TEMPERATURSCHWANKUNGEN RESISTENCIA A LOS CHOQUES TÉRMICOS - RESISTENCIA A LOS CHOQUES TÉRMICOS СТОЙКОСТЬ К ПЕРЕПАДАМ ТЕМПЕРАТУРЫ	EN ISO 10545-9	TEST SUPERATO SECONDO EN ISO 10545-1 TEST PASSED ACCORDING TO - TEST BESTANDEN NACH TEXTE DÉPASSÉ SELON - PRUEBA SUPERADA SEGÚN ИСПЫТАНИЕ ПРОЙДЕНО В СООТВЕТСТВИИ С		NESSUN DANNO NO DAMAGE - KEIN SCHADEN AUCUN DOMMAGE - NINGUN DAÑO БЕЗ ПОВРЕЖДЕНИЙ
DILATAZIONE ALL'UMIDITÀ (IN MMM) MOISTURE EXPANSION (IN MMM) - FEUCHTIGKEITSBEDINGTE AUSDEHNUNG (IN MMM) DILATATION À L'HUMIDITÉ (EN MMM) - DILATACIÓN CON LA HUMEDAD (EN MMM) ВЛАЖНОСТНОЕ РАСТЯЖЕНИЕ (В MMM)	EN ISO 10545-10	VALORE DICHIARATO DECLARED VALUE - ANGEGEBENER WERT VALEUR DÉCLARÉE - VALOR DECLARADO - ЗАЯВЛЕННОЕ ЗНАЧЕНИЕ		MAX 0,2 mm / m
RESISTENZA AI PRODOTTI CHIMICI USO DOMESTICO E ADDITIVI PER PISCINA RESISTANCE TO HOUSEHOLD AND SWIMMING POOL CHEMICAL PRODUCTS - RBESTÄNDIGKEIT GEGEN HAUSHALTSCHEMIKALIEN UND ZUSATZSTOFFE FÜR SWIMMINGPOOLS - RESISTENCIA A LOS PRODUCTOS QUÍMICOS USO DOMÉSTICO Y ADITIVOS PARA PISCINA - СТОЙКОСТЬ К ДЕЙСТВИЮ БЫТОВЫХ ХИМИЧЕСКИХ СРЕДСТВ, ДОБАВКАМ В БАССЕЙНЫ	EN ISO 10545-13	GB MIN		CONFORME COMPLYING - ERFÜLLT CONFORME - CONFORME СОУТВЕТСТВУЕТ
RESISTENZA A BASSE CONCENTRAZIONI DI ACIDI E ALCALI RESISTANCE TO LOW CONCENTRATIONS OF ACIDS AND ALKALI - BESTÄNDIGKEIT BEI NIEDRIGEN KONZENTRATIONEN VON SÄUREN UND LAUGEN - RESISTENCIA A BAJAS CONCENTRACIONES D'ACIDES ET ALCALIS - RESISTENCIA A BAJAS CONCENTRACIONES DE ÁCIDOS Y ALCALIS - СТОЙКОСТЬ К ДЕЙСТВИЮ НИЗКИХ КОНЦЕНТРАЦИЙ КИСЛОТ И ЩЕЛОЧЕЙ	EN ISO 10545-13	VALORE DICHIARATO DECLARED VALUE - ANGEGEBENER WERT VALEUR DÉCLARÉE - VALOR DECLARADO - ЗАЯВЛЕННОЕ ЗНАЧЕНИЕ		CONFORME COMPLYING - ERFÜLLT CONFORME - CONFORME СОУТВЕТСТВУЕТ
RESISTENZA AD ALTE CONCENTRAZIONI DI ACIDI E ALCALI RESISTANCE TO HIGH CONCENTRATIONS OF ACIDS AND ALKALI - BESTÄNDIGKEIT BEI HOHEN KONZENTRATIONEN VON SÄUREN UND LAUGEN - RESISTENCIA A ALTAS CONCENTRACIONES D'ACIDES ET ALCALIS - RESISTENCIA A ALTAS CONCENTRACIONES DE ÁCIDOS Y ALCALIS - СТОЙКОСТЬ К ДЕЙСТВИЮ ВЫСОКИХ КОНЦЕНТРАЦИЙ КИСЛОТ И ЩЕЛОЧЕЙ	EN ISO 10545-13	VALORE DICHIARATO DECLARED VALUE - ANGEGEBENER WERT VALEUR DÉCLARÉE - VALOR DECLARADO - ЗАЯВЛЕННОЕ ЗНАЧЕНИЕ		CONFORME COMPLYING - ERFÜLLT CONFORME - CONFORME СОУТВЕТСТВУЕТ
RESISTENZA ALLE MACCHIE RESISTANCE TO STAINS - FLECKENBESTÄNDIGKEIT RESISTANCE AUX TACHES - RESISTENCIA A LAS MANCHAS УСТОЙЧИВОСТЬ К ПЯТНООБРАЗОВАНИЮ	EN ISO 10545-14	CLASSE 3 MIN		CONFORME COMPLYING - ERFÜLLT CONFORME - CONFORME СОУТВЕТСТВУЕТ
RESISTENZA AL PIOMBO E CADMIO LEAD AND CADMIUM DISCHARGE - ABGABE VON BLEI UND CADMIUM PERTE DE PLOMB ET CADMIUM - CESIÓN DE PLOMO Y CADMIO ВЫДЕЛЕНИЕ СВИНЦА И КАДМИЯ	EN ISO 10545-15	VALORE DICHIARATO DECLARED VALUE - ANGEGEBENER WERT VALEUR DÉCLARÉE - VALOR DECLARADO - ЗАЯВЛЕННОЕ ЗНАЧЕНИЕ		< AL LIMITE DI RILEVAMENTO < THAN INSTRUMENT LIMIT < UNMESSBARES WERT < LIMITE DEL INSTRUMENT < LIMITE DEL INSTRUMENTO < НА ПРЕДЕЛЕ ОПРЕДЕЛИМОСТИ

PER I CERTIFICATI SPECIFICI, E VALORI PUNTUALI, CONTATTARE FINCIBEC SPA - FOR SPECIFIC CERTIFICATES AND DATA, CONTACT FINCIBEC S.P.A. - FÜR SPEZIELLE ZERTIFIKATE UND PUNKTWERTE, FINCIBEC S.P.A. KONTAKTIEREN - POUR LES CERTIFICATS SPÉCIFIQUES ET LES VALEURS PONCTUELLES, CONTACTER FINCIBEC S.P.A. - PARA LOS CERTIFICADOS ESPECÍFICOS Y LOS VALORES CONCRETOS, CONTACTE CON FINCIBEC S.P.A. - ВО ВОПРОСАМ СПЕЦИАЛЬНЫХ СЕРТИФИКАТОВ И ПОКАЗАТЕЛЕЙ СВЯЖИТЕСЬ С FINCIBEC SPA.

ESCLUSO PEZZI SPECIALI ED ELEMENTI DECORATIVI - WITH THE EXCEPTION OF SPECIAL PIECES AND DECORS.

CARATTERISTICHE TECNICHE / GRES FINE PORCELLANATO COLORATO IN MASSA

TECHNICAL SPECIFICATIONS / FULL-BODY COLOURED PORCELAIN STONeware - TECHNISCHE EIGENSCHAFTEN / DURCHGEFÄRBTES FEINSTEINZEUG - CARACTÉRISTIQUES TECHNIQUES / GRÈS FIN CÉRAME COLORÉ EN MASSE - CARACTERÍSTICAS TÉCNICAS / GRES FINO PORCELÁNICO TENIDO EN MASA - ТЕХНИЧЕСКИЕ ХАРАКТЕРИСТИКИ / МЕЛКОЗЕРНИСТЫЙ КЕРАМОГРАНИТ, ОКРАШЕННЫЙ В МАССЕ

STANDARDS : UNI EN 14411 ANNEX G - Bla / UNI EN ISO 13006 ANNEX G - Bla

	CARATTERISTICHE TECNICHE TECHNICAL DATA TECHNISCHE DATEN CARACTÉRISTIQUES TECHNIQUES CARACTERÍSTICAS TÉCNICAS ТЕХНИЧЕСКИЕ ХАРАКТЕРИСТИКИ	TIPO DI PROVA STANDARD OF TEST NORME DU TEST TESTNORM TIPO DE PRUEBA ТИП ТЕСТА	VALORI PRESCRITTI DALLE NORME INTERNATIONAL STANDARDS INTERNATIONALE NORMWERTE VALEURS PRÉVUES PAR LES NORMES VALORES PREVISTOS POR LAS NORMAS ПРЕДЪОМOTРЕННЕ СТАНДАРТОМ		VALORE MEDIO NAXOS NAXOS AVERAGE VALUE NAXOS MITTELWERT VALEUR MOYEN NAXOS VALOR MEDIO NAXOS СРЕДНЕЕ ЗНАЧЕНИЕ NAXOS
			REQUIREMENTS FOR NOMINAL SIZE		
			7 cm ≤ N ≤ 15 cm	N ≥ 15 cm	NAT
	LATI SIDES - SEITEN COTES - CANTOS РАЗМЕРЫ СТОРОН	EN ISO 10545-2	± 0,9 mm	± 0,6% (± 2,0 mm)	CONFORME COMPLYING - ERFÜLLT CONFORME - CONFORME COOTBETCTBYET
	SPESSORE THICKNESS - DICKE ÉPAISSEUR - ESPESOR ТОЛЩИНА	EN ISO 10545-2	± 0,5 mm	± 5,0% (± 0,5 mm)	CONFORME COMPLYING - ERFÜLLT CONFORME - CONFORME COOTBETCTBYET
	RETTILINEITÀ DEGLI SPIGOLI STRAIGHTNESS OF SIDES - GERADLINIGKEIT DER KANTEN RECTITUDE DES ARETES - RECTITUD DE LOS CANTOS - КОУСОУГОЛЬНОСТЬ	EN ISO 10545-2	± 0,75 mm	± 0,5% (± 1,5 mm)	CONFORME COMPLYING - ERFÜLLT CONFORME - CONFORME COOTBETCTBYET
	ORTOGONALITÀ RECTANGULARITY - RECHTWINKLIGKEIT PERPENDICULARITÉ - ORTOGONALIDAD КРИБИЗНА СТОРОН	EN ISO 10545-2	± 0,75 mm	± 0,5% (± 2 mm)	CONFORME COMPLYING - ERFÜLLT CONFORME - CONFORME COOTBETCTBYET
	PLANARITÀ SURFACE FLATNESS - EBENFLÄCHIGKEIT PLANEITE DE SURFACE - PLANEIDAD КРИБИЗНА ЛИЦЕВОЙ ПОВЕРХНОСТИ	EN ISO 10545-2	± 0,75 mm	± 0,5% (± 2,0 mm)	CONFORME COMPLYING - ERFÜLLT CONFORME - CONFORME COOTBETCTBYET
	ASSORBIMENTO D'ACQUA WATER ABSORPTION - WASSERAUFNAHME ABSORPTION D'EAU - ABSORCIÓN DE AGUA ВОДОПОГЛОЩЕНИЕ	EN ISO 10545-3	≤ 0,5 %		≤ 0,1 %
	RESISTENZA ALLA FLESSIONE FLEXION RESISTANCE - BIEGEFESTIGKEIT RESISTENCIA A LA FLEXIÓN - RESISTENCIA A LA FLEXIÓN ПРЕДЕЛ ПРОЧНОСТИ ПРИ ИЗГИБЕ	EN ISO 10545-4	S ≥ 1.300 N R ≥ 35 N/mm ²		CONFORME COMPLYING - ERFÜLLT CONFORME - CONFORME COOTBETCTBYET
	RESISTENZA ALL'URTO IMPACT RESISTANCE - STOSSFESTIGKEIT RESISTANCE AUX CHOCs - RESISTENCIA A LOS GOLPES УДАРСТОЙКОСТЬ	EN ISO 10545-5	VALORE DICHIARATO DECLARED VALUE - ANGEGBENER WERT VALEUR DÉCLARÉE - VALOR DECLARADO - ЗАЯВЛЕННОЕ ЗНАЧЕНИЕ		> 0,80
	RESISTENZA ALL'ABRASIONE ABRASION RESISTANCE - ABRIEBFESTIGKEIT RESISTENCIA A L'ABRASION - RESISTENCIA A LA ABRASION ПРОЧНОСТЬ НА ИСТИРАНИЕ	EN ISO 10545-6	≤ 175 mm ³		CONFORME COMPLYING - ERFÜLLT CONFORME - CONFORME COOTBETCTBYET
	COEFFICIENTE DI DILATAZIONE TERMICA LINEARE COEFFICIENT OF LINEAR THERMAL EXPANSION - LINEARER WÄRMEAUSSDEHNUNGSKOEFFIZIENT COEFFICIENT DE DILATATION THERMIQUE LINEAIRE - COEFFICIENTE DE DILATACION TERMICA LINEAL КОЭФИЦИЕНТ ЛИНЕЙНОГО ТЕРМИЧЕСКОГО РАСТЯЖЕНИЯ	EN ISO 10545-8	VALORE DICHIARATO DECLARED VALUE - ANGEGBENER WERT VALEUR DÉCLARÉE - VALOR DECLARADO - ЗАЯВЛЕННОЕ ЗНАЧЕНИЕ		α = 6,7 × 10 ⁻⁶ / °C
	RESISTENZA AGLI SBALZI TERMICI RESISTANCE TO THERMAL SHOCKS - BESTÄNDIGKEIT GEGEN TEMPERATURSCHWANKUNGEN RESISTANCE AUX CHOCs THERMIQUES - RESISTENCIA A LOS CHOQUES TERMICOS СТОЙКОСТЬ К ПЕРЕПАДАМ ТЕМПЕРАТУРЫ	EN ISO 10545-9	TEST SUPERATO SECONDO EN ISO 10545-1 TEST PASSED ACCORDING TO - TEST BESTANDEN NACH TEXTE DÉPASSE SELON - PRUEBA SUPERADA SEGUN ИСПЫТАНИЕ ПРОЙДЕНО В СООТВЕТСТВИИ С		NESSUN DANNO NO DAMAGE - KEIN SCHADEN AUCUN DOMMAGE - NINGUN DANNO БЕЗ ПОВРЕЖДЕНИЙ
	DILATAZIONE ALL'UMIDITÀ (IN MMM) MOISTURE EXPANSION (IN MMM) - FEUCHTIGKEITSBEDINGTE AUSDEHNUNG (IN MMM) DILATATION A L'HUMIDITE (EN MMM) - DILATACION CON LA HUMEDAD (EN MMM) ВЛАЖНОСТНОЕ РАСТЯЖЕНИЕ (В MMM)	EN ISO 10545-10	VALORE DICHIARATO DECLARED VALUE - ANGEGBENER WERT VALEUR DÉCLARÉE - VALOR DECLARADO - ЗАЯВЛЕННОЕ ЗНАЧЕНИЕ		MAX 0,1 mm / m
	RESISTENZA AL GELO FROST RESISTANCE - FROSTBESTÄNDIGKEIT RESISTANCE AU GEL - RESISTENCIA AL HIELO МОРОЗОСТОЙКОСТЬ	EN ISO 10545-12	TEST SUPERATO SECONDO EN ISO 10545-1 TEST PASSED ACCORDING TO - TEST BESTANDEN NACH TEXTE DÉPASSE SELON - PRUEBA SUPERADA SEGUN ИСПЫТАНИЕ ПРОЙДЕНО В СООТВЕТСТВИИ С		NESSUN DANNO NO DAMAGE - KEIN SCHADEN AUCUN DOMMAGE - NINGUN DANNO БЕЗ ПОВРЕЖДЕНИЙ
	RESISTENZA AI PRODOTTI CHIMICI USO DOMESTICO E ADDITIVI PER PISCINA RESISTANCE TO HOUSEHOLD AND SWIMMING POOL CHEMICAL PRODUCTS - BESTÄNDIGKEIT GEGEN HAUSHALTS-CHEMIKALIEN UND ZUSATZSTOFFE FÜR SWIMMINGPOOLS - RESISTANCE AUX PRODUITS CHIMIQUES USAGE DOMESTIQUE ET ADDITIFS POUR PISCINE - RESISTENCIA A LOS PRODUCTOS QUIMICOS DE USO DOMESTICO Y ADITIVOS PARA PISCINA - СТОЙКОСТЬ К ДЕЙСТВИЮ БЫТОВЫХ ХИМИЧЕСКИХ СРЕДСТВ, ДОБАВКАМ В БАССЕЙНЫ	EN ISO 10545-13	UB MIN		CONFORME COMPLYING - ERFÜLLT CONFORME - CONFORME COOTBETCTBYET
	RESISTENZA A BASSE CONCENTRAZIONI DI ACIDI E ALCALI RESISTANCE TO LOW CONCENTRATIONS OF ACIDS AND ALKALI - BESTÄNDIGKEIT BEI NIEDRIGEN KONZENTRATIONEN VON SÄUREN UND LAUGEN - RESISTANCE À BASSES CONCENTRATIONS D'ACIDES ET ALCALIS - RESISTENCIA A BAJAS CONCENTRACIONES DE ÁCIDOS Y ALCALIS - СТОЙКОСТЬ К ДЕЙСТВИЮ НИЗКИХ КОНЦЕНТРАЦИЙ КИСЛОТ И ЩЕЛОЧЕЙ	EN ISO 10545-13	VALORE DICHIARATO DECLARED VALUE - ANGEGBENER WERT VALEUR DÉCLARÉE - VALOR DECLARADO - ЗАЯВЛЕННОЕ ЗНАЧЕНИЕ		CONFORME COMPLYING - ERFÜLLT CONFORME - CONFORME COOTBETCTBYET
	RESISTENZA AD ALTE CONCENTRAZIONI DI ACIDI E ALCALI RESISTANCE TO HIGH CONCENTRATIONS OF ACIDS AND ALKALI - BESTÄNDIGKEIT BEI HOHEN KONZENTRATIONEN VON SÄUREN UND LAUGEN - RESISTANCE À HAUTES CONCENTRATIONS D'ACIDES ET ALCALIS - RESISTENCIA A ALTAS CONCENTRACIONES DE ÁCIDOS Y ALCALIS - СТОЙКОСТЬ К ДЕЙСТВИЮ ВЫСОКИХ КОНЦЕНТРАЦИЙ КИСЛОТ И ЩЕЛОЧЕЙ	EN ISO 10545-13	VALORE DICHIARATO DECLARED VALUE - ANGEGBENER WERT VALEUR DÉCLARÉE - VALOR DECLARADO - ЗАЯВЛЕННОЕ ЗНАЧЕНИЕ		CONFORME COMPLYING - ERFÜLLT CONFORME - CONFORME COOTBETCTBYET
	RESISTENZA ALLE MACCHIE RESISTANCE TO STAINS - FLECKENBESTÄNDIGKEIT RESISTANCE AUX TACHES - RESISTENCIA A LAS MANCHAS УСТОЙЧИВОСТЬ К ПЯТНООБРАЗОВАНИЮ	EN ISO 10545-14	VALORE DICHIARATO DECLARED VALUE - ANGEGBENER WERT VALEUR DÉCLARÉE - VALOR DECLARADO - ЗАЯВЛЕННОЕ ЗНАЧЕНИЕ		CONFORME COMPLYING - ERFÜLLT CONFORME - CONFORME COOTBETCTBYET
	CESSIONE DI PIOMBO E CADMIO LEAD AND CADMIUM DISCHARGE - ABGABE VON BLEI UND CADMIUM PERTE DE PLOMB ET CADMIUM - CESION DE PLOMO Y CADMIO Выделение свинца и кадмия	EN ISO 10545-15	VALORE DICHIARATO DECLARED VALUE - ANGEGBENER WERT VALEUR DÉCLARÉE - VALOR DECLARADO - ЗАЯВЛЕННОЕ ЗНАЧЕНИЕ		< AL LIMITE DI RILEVAMENTO < THAN INSTRUMENT LIMIT - UNMESSBARES WERT < LIMITE DE L'INSTRUMENT - LIMITE DEL INSTRUMENTO < НА ПРЕДЕЛЕ ОПРЕДЕЛИМОСТИ
	SCIVOLosità SKID RESISTANCE - RUTSCHWERT GLISSANCE - ADHERENCIA СКОЛЬЗКОСТЬ	DM. 236/89 BCRA ANSI A 137.1 DIN 51130	> 0,40 WET DCOF > 0,42 -		> 0,40 (23x100) > 0,42 (23x100) R9 (23x100)

PER I CERTIFICATI SPECIFICI, E VALORI PUNTUALI, CONTATTARE FINCIBEC SPA - FOR SPECIFIC CERTIFICATES AND DATA, CONTACT FINCIBEC S.P.A. - FÜR SPEZIELLE ZERTIFIKATE UND PUNKTWERTE, FINCIBEC S.P.A. KONTAKTIEREN - POUR LES CERTIFICATS SPÉCIFIQUES ET LES VALEURS PONCTUELLES, CONTACTER FINCIBEC S.P.A. - PARA LOS CERTIFICADOS ESPECIFICOS Y LOS VALORES CONCRETOS, CONTACTE CON FINCIBEC S.P.A. - ВО ВОПРОСАХ СПЕЦИАЛЬНЫХ СЕРТИФИКАТОВ И ПОКАЗАТЕЛЕЙ СВЯЖИТЕСЬ С FINCIBEC SPA.

ESCLUSO PEZZI SPECIALI ED ELEMENTI DECORATIVI - WITH THE EXCEPTION OF SPECIAL PIECES AND DECORS.

fiber
THE PURE AND SIMPLE MOODS OF NATURE

★ ★ ★ ★ ★
NAXOS[®]
C E R A M I C H E

FINCIBEC GROUP



FINCIBEC S.P.A

Uffici Comm.li, Stabilimento:
Strada Statale 569, 169
41014 Solignano (MO) Italy

Magazzino: Strada Statale 569, 187
41014 Solignano (MO) Italy
Tel. +39 059.748811
Fax +39 059.797376
www.naxos-ceramica.it
info@naxos-ceramica.it

Amministrazione:
Via Valle D'Aosta, 47
41049 Sassuolo (MO) Italy
Tel. +39 0536.861300
Fax +39 0536.861351
www.fincibec.it
info@fincibec.it

GRUPPO FIRE - Fire S.r.l



Fincibec S.p.A
socio di:

